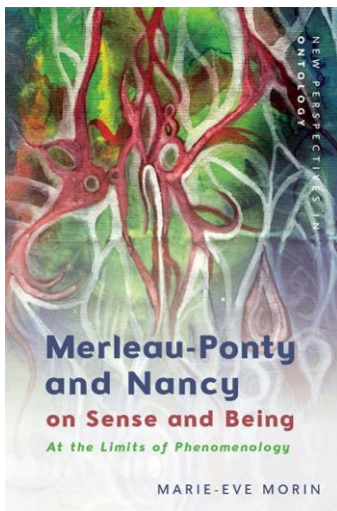


AN AUTHOR MEETS HER CRITICS

Marie-Eve Morin

Department of Philosophy, University of Alberta

Merleau-Ponty and Nancy on Sense and Being: At the Limits of Phenomenology (Edinburgh University Press, 2022)



Date and Time
June 20, 2022
4:30 p.m.

Location
METU
Philosophy Dept.
Room B103

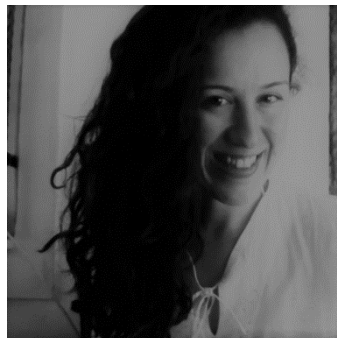


Panelists



James Griffith

Department of
Philosophy,
Middle East Technical
University



Yasemin Sari

Department of
Philosophy & World
Religions,
University of Northern
Iowa



Corry Shores

Department of
Philosophy,
Middle East Technical
University